



MISSOURI DEPARTMENT OF
**HEALTH &
SENIOR SERVICES**

**PUBLIC HEALTH:
PURPOSE. PARTNERSHIPS. PERSEVERANCE.**



Robin Pendleton

Senior Staff Development Training Specialist



Robin.Pendleton@health.mo.gov



573-751-3462



Health.Mo.Gov

TODAY'S FOCUS



PURPOSE

Defining the “why”
behind our work in
public health



PARTNERSHIPS

Showcasing our
collective
achievements



PERSEVERANCE

Forging
our future
together



PURPOSE.

Outcomes and Opportunities

in Missouri

Cancer Mortality Rate

39th

157.9 death rate

Infant Mortality Rate

27th

5.47 deaths per 100k births

Maternal Mortality Rate

44th

34.6 deaths per 100k births

Firearms Mortality Rate

42nd

23.2 death rate

Opioid Mortality Rate

31st

36.5 death rate

Overall Healthy Living

42nd

America's Health Rankings

Chronic Lower Respiratory Disease Mortality Rate

41st

Ranking 42nd in smoking (19.60% of the population)

Diabetes Mortality Rate

16th

Ranking 25th in prevalence (10.9% of the population)

Heart Disease Mortality Rate

39th

196.7 death rate

Kidney Disease Mortality Rate

48th

20.8 death rate

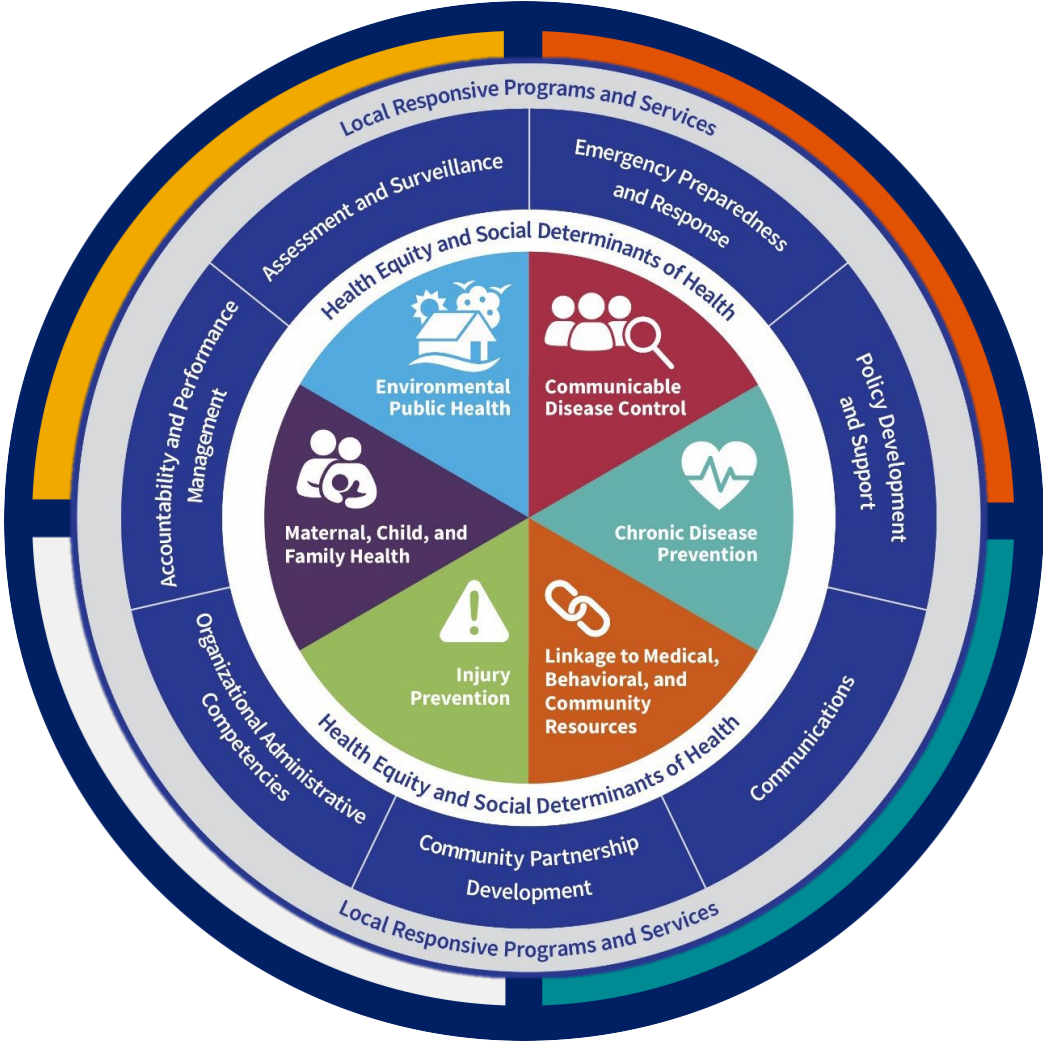
Data compiled from the Centers for Disease Control & Prevention, America's Health Rankings and fellow state health departments



Missouri's Foundational Public Health Services Model

#HealthierMO Initiative

The FPHS model was created by HealthierMO, which is a project of the Missouri Public Health Association. Initial funding was provided by Missouri Foundation for Health and Health Forward Foundation, with bridge funding from Missouri Department of Health and Senior Services.



STRONG & RESILIENT

Public health system

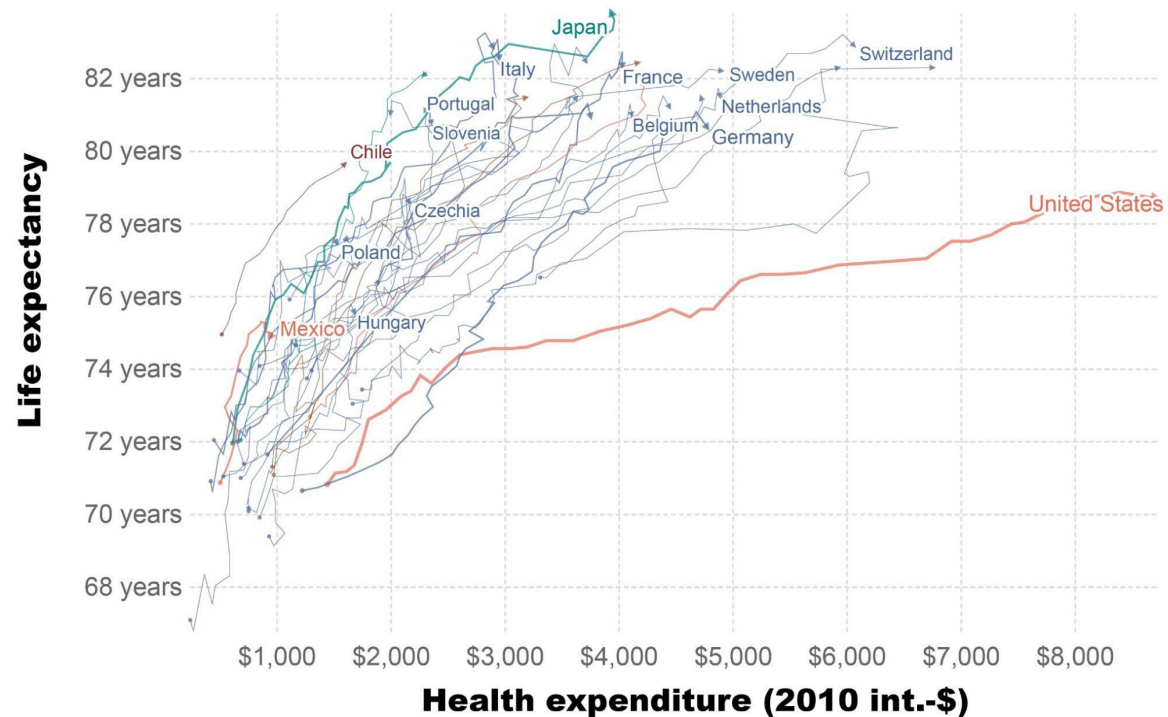


Healthcare Spending...

The U.S. spends more on healthcare, yet our life expectancy is worse

Life expectancy vs. health expenditure, 1970 to 2015

Health financing is reported as the annual per capita health expenditure and is adjusted for inflation and price level differences between countries (measured in 2010 international dollars).

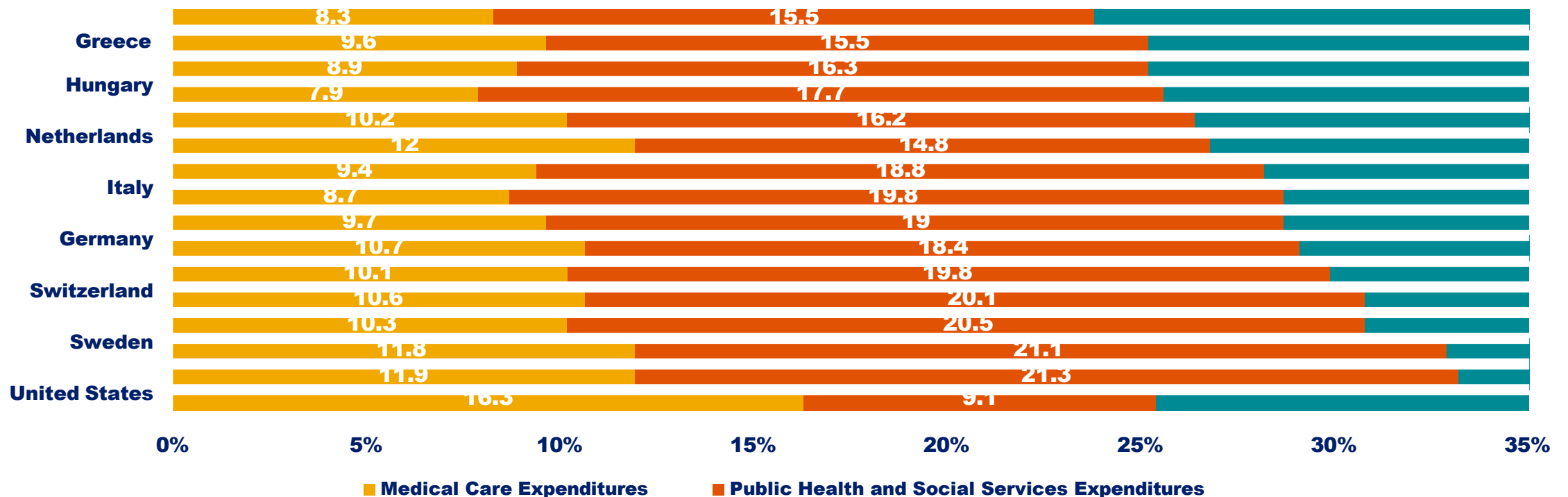


Source: Data compiled from multiple sources by World Bank; Health Expenditure and Financing - OECDstat (2017)
OurWorldInData.org/the-link-between-life-expectancy-and-health-spending-us-focus • CC BY

...Versus Community Investments

For every \$1 spent on healthcare, most countries spend \$2 on public health and social services. The U.S. only spends 55 cents.

Expenditures as a percentage of GDP



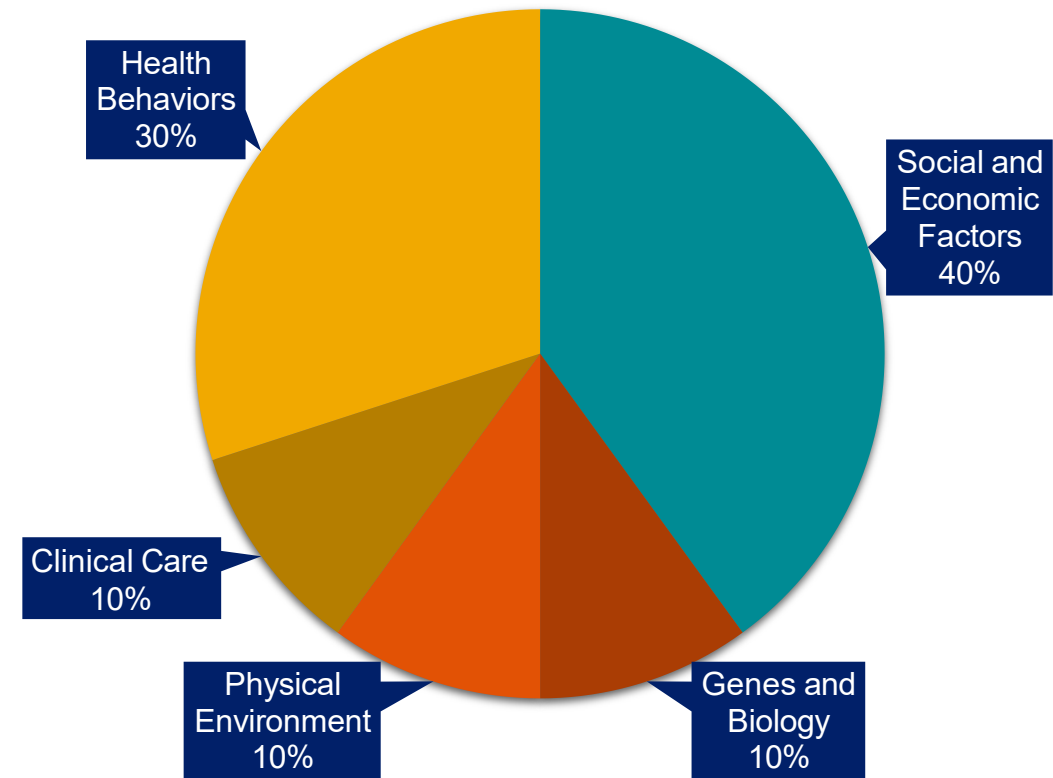
The Case for Investing

at the community level

Determinants of Health

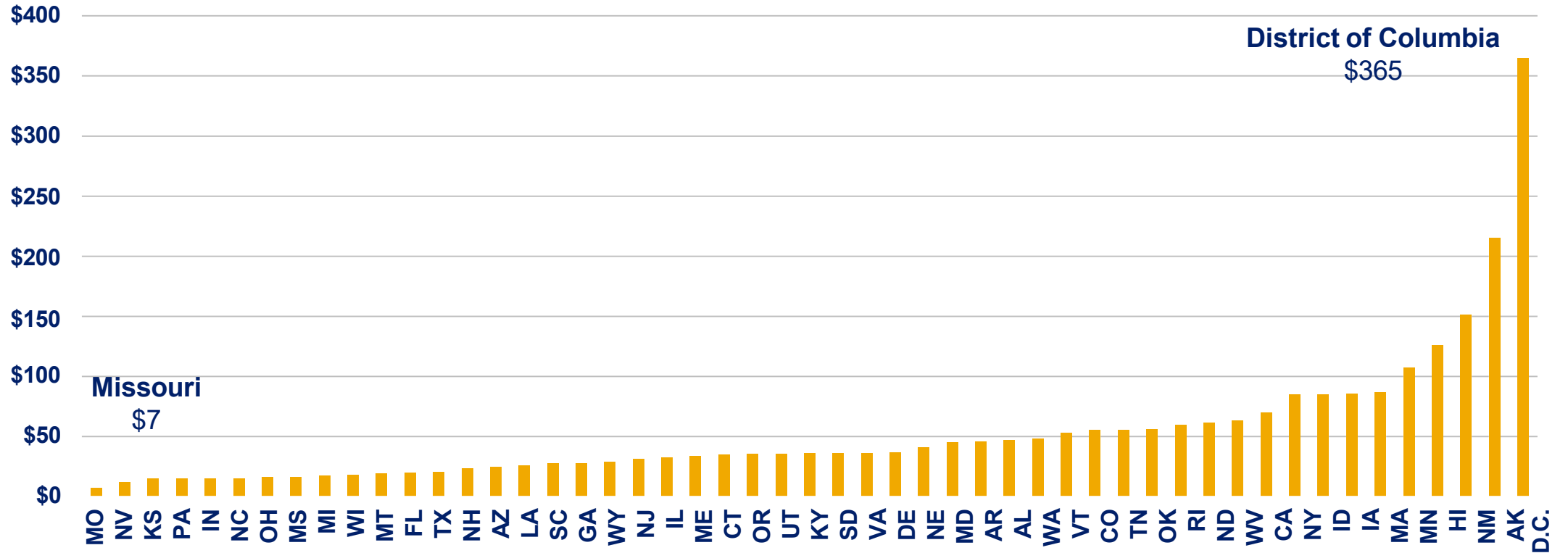
**Shift investments
to upstream
drivers of health:**

Around 80% of what matters for health happens *outside the doctor's office*.



State Comparison: Per Person Funding

Missouri ranks 51st among jurisdictions and would only move to 50th if we doubled public health funding.



REFRAMING THE CONVERSATION

What is taking American lives at the highest rate?

All Wars

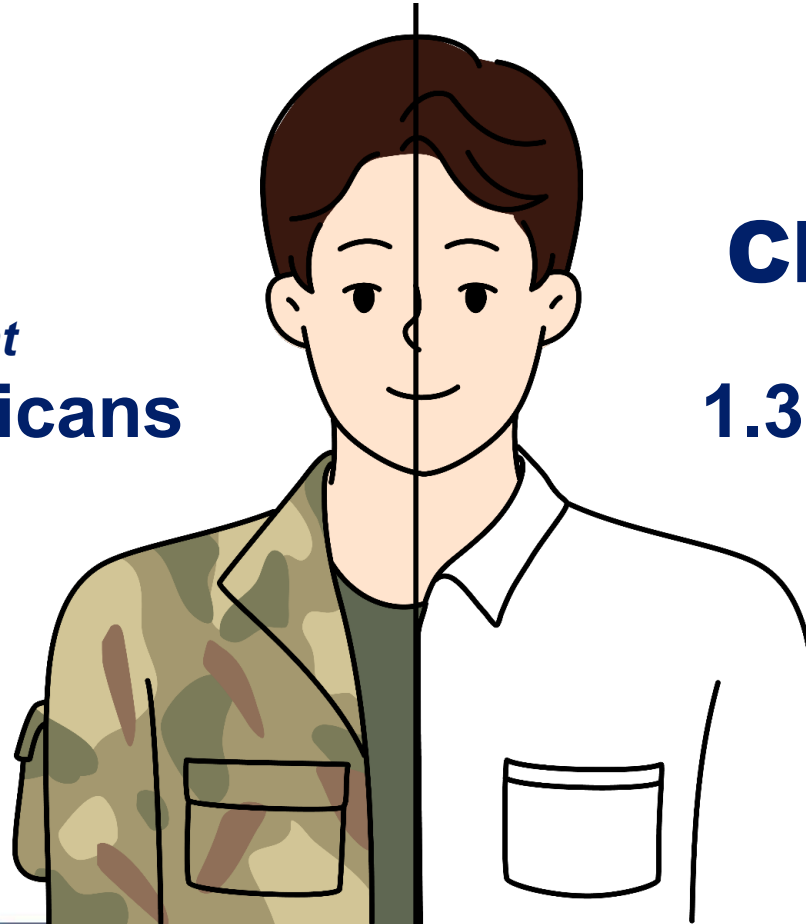
Civil War - Present

1.1 million Americans

Chronic Disease

Annually

1.3 million+ Americans



REFRAMING THE CONVERSATION

What do Americans expect of their government?



Both public health and the military are
PROTECTING HEALTH AND SAFETY



PARTNERSHIPS.



INFRASTRUCTURE INVESTMENT

\$182 million ARPA funding to design and construct a One Health multi-agency laboratory campus, co-locating DHSS, DNR, MDA, MDC and MSHP laboratories.

Creates a multifaceted laboratory synergy and STEM destination for Missourians.

ONE HEALTH LABORATORY

Transformative investment in Missouri state agency laboratory infrastructure.

WORKFORCE DEVELOPMENT

Investing in the public health and health care
WORKFORCE

CNA Training
\$1.5 million to help reverse staffing shortfalls at nursing homes

Missouri GME Program
\$2.3 million to create new residency slots to retain the primary care physicians and psychiatrists we are training

PRIMO Program
\$1 million to expand program and encourage service in underserved areas

Preceptor Tax Credit
\$200,000 in tax credits will be awarded each calendar year to up to 200 community based faculty preceptors that are providing training to Missouri medical students or physician assistant students without compensation

Public Health Workforce Analysis
In progress

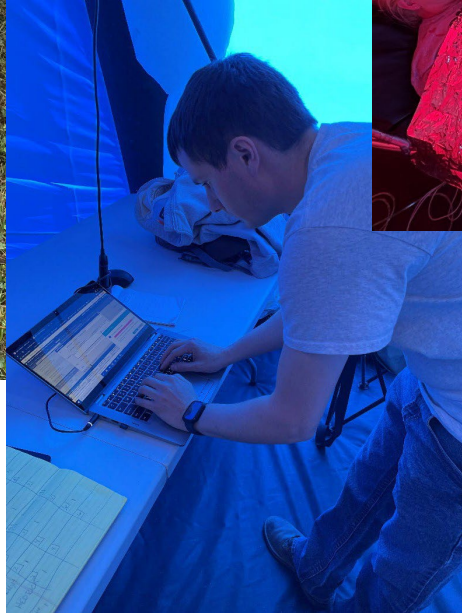
Public Health Internships and Social Services Apprenticeships
In progress





MHA

MISSOURI HOSPITAL ASSOCIATION



MHA
MISSOURI HOSPITAL ASSOCIATION

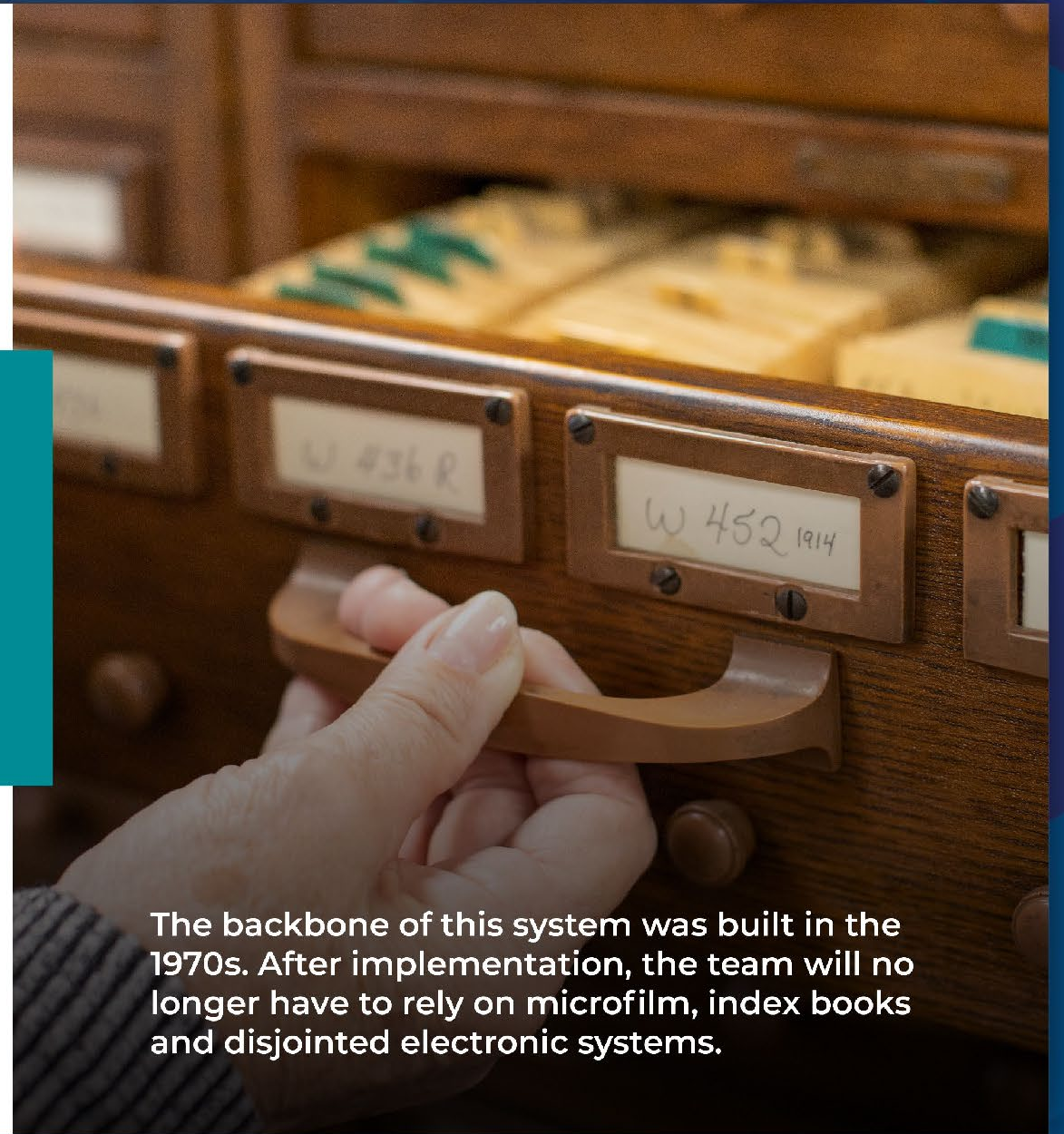
VITAL RECORDS SYSTEM OVERHAUL



Five year ROI of \$5 million

Redesign and consolidate the myriad of vital records systems that have been built over the last 112 years.

- 30% time-savings for vital records issuance
- 50% time-savings for adoption requests
- 45,000 hours saved by team members



The backbone of this system was built in the 1970s. After implementation, the team will no longer have to rely on microfilm, index books and disjointed electronic systems.

E-WIC IMPLEMENTATION

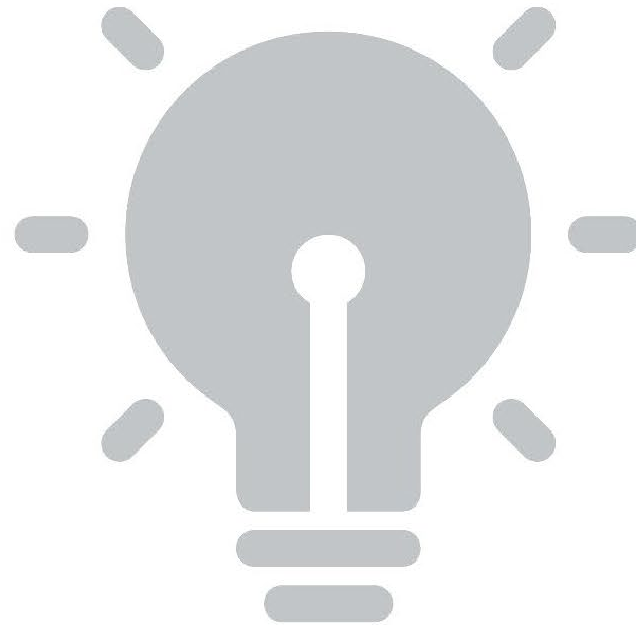
Benefiting more than 80,000 participants at 600 retailers

Decreased checkout
time at grocery store

01

Flexibility to purchase
WIC-approved foods

02



03

Combine all household
benefits onto one card

04

Begins path to
benefits being loaded
automatically



**FARM STRESS
WEIGHING
YOU DOWN?**

Talk or text with someone who gets it.
The Missouri Department of Agriculture's AgriStress Helpline offers confidential, 24/7 support from real people who understand farming.

 **833-897-2474** 



Missouri farmers are still impacted by drought, *even with recent rains.*

Call or text the AgriStress Helpline 24/7 if you, or someone you know, is struggling with stress. It's free and confidential.

 **833-897-2474** 
Talk or text with someone who gets it.

AGING WITH DIGNITY



Implemented a value-based payment system to incentivize quality outcomes for participants



Implemented transformed Nursing Facility Level of Care to ensure those most at risk of institutionalization meet eligibility criteria



Substantial increases to baseline wages to support the direct service workforce



PERSEVERANCE.

ESTABLISHING FPHS AS A MISSOURI STANDARD

Foundational Public Health Services Enhancing the public health system

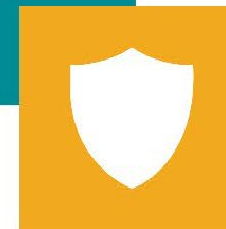
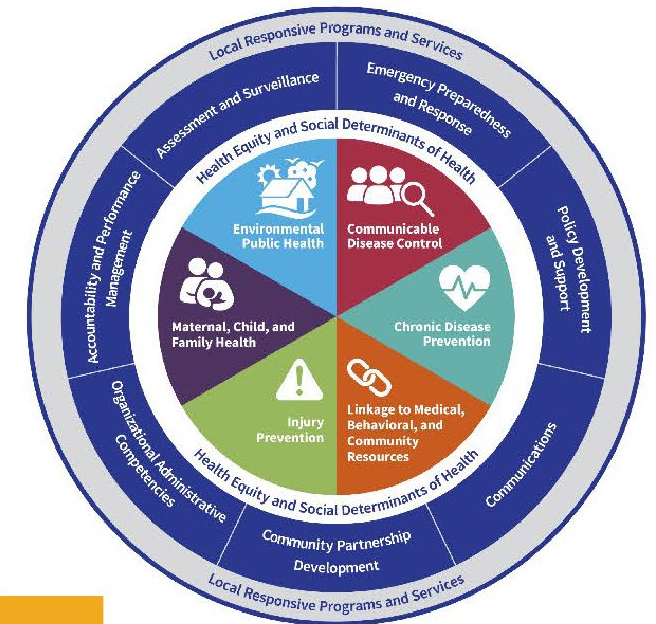
DHSS participated in a collaborative grassroots project to create a Missouri-specific model for delivering foundational public health services to Missourians.

The Missouri Foundational Public Health Services (FPHS) Model was adopted by DHSS to establish the baseline skills and programs that every public health department needs to keep every Missourian healthy and safe.

DHSS is working towards implementation of the Missouri FPHS Model by contracting with the University of Missouri to perform a cost-gap analysis to demonstrate the funding needed to successfully implement foundational public health services for every Missourian.

55%
of Missouri LPHAs
said they were unable to fully
perform in key delivery areas:

- Environmental public health
- Communicable disease control
- Chronic disease prevention
- Linkage to medical, behavioral and community resources
- Injury prevention
- Maternal, child and family health



Foundational Capabilities Foundational Areas

Missouri's Foundational Public Health Services Model



Missouri will use federal funds to conduct a costing analysis of required funding to implement FPHS state-wide beginning CY2023.



DHSS will work with LPHAs collaboratively beginning in CY2023 to focus on development of accountability measures.



DHSS believes funding FPHS state-wide should be a balance of local-state-federal funds.





Missouri Public Health System at a glance

The best
IS YET TO COME



MISSOURI DEPARTMENT OF
**HEALTH &
SENIOR SERVICES**